

# Web DS1500/1700

## Interactive Digital Signage Kiosks



### Key Features:

- Elegant all-in-one, slim, space saving design; efficient mounting
- Fan-less, high performance operation
- High contrast LCD panel with wide viewing angle
- Low power consumption
- IR touch screen option
- Optional magnetic card reader
- Web-based software for remote display management
- Web-based, centralized content management and distribution software
- Remote player monitoring, control, and upgrade

The Web Signage System's DS1500/ 1700 offers an integrated computing display in one slim, mountable package. Ideal for digital signage and kiosk applications, this elegant all-in-one system can be remotely managed, and a Windows operating system makes it easy to integrate with other applications. This fully compatible solution of hardware and software, with touch and point-of-service options, offers efficient deployments. Bring dynamic interaction to your audience with the flexible DS1500/ 1700; the future of interactive signage has arrived.

### Specifications:

<b>Display</b>	15" (DS1500) or 17" (DS1700) TFT LCD
<b>Display Resolution</b>	DS1500: Up to 1024 x 768; DS1700: Up to 1280 x 1024
<b>Processor</b>	1.5 GHz x86 processor
<b>Memory (RAM)</b>	1GB
<b>Operating Systems</b>	Windows® XP Embedded
<b>Storage</b>	2GB, 4GB, 8GB or 16GB flash module; 2.5" HDD
<b>Display Enclosure</b>	ABS + PC Plastic
<b>Base or Pedestal</b>	Optional: Detachable aluminum construction; VESA- compliant mounting
<b>Control Buttons</b>	Five (5) side buttons - Power (1) and Programmable (4)
<b>Input/ Output Ports</b>	1 Serial port, 1 Video-in RCA jack, 1 S-Video input port, 4 USB 2.0 ports, RJ45 connector for Ethernet, 1 Audio-out jack, 1 Microphone-in jack, 1 Line-in jack, and 1 DC-in jack
<b>Stereo speakers</b>	Built-in speakers
<b>Network Interface</b>	Ethernet 10/100 MB Base-T LAN; 802.11a/b/g WLAN
<b>AC/DC adapter</b>	Input voltage 100~240V AC, 50/60 Hz Output: 18.5V, 3.5A
<b>Power Cords</b>	North America, EU, UK, China

<b>Dimensions (H x W x D)</b>	DS1500: 10.9 x 13.9 x 2.5 in, 278 x 354 x 63 mm; DS1700: 12.6 x 15.3 x 2.7 in, 320 x 388 x 68 mm
<b>Weight</b>	DS1500: 10.58 lbs (4.8 Kg); DS1700: 12.8 lbs (5.8 Kg)
<b>Regulatory</b>	FCC Class B, CE, UL, C-Tick, RoHS compliant
<b>Operating Temperature</b>	0°C - 40°C
<b>Humidity</b>	0% - 90% non-condensing

\* Specifications subject to change without notice.

### Applications:

The DS1500/ 1700 signage system is ideal for the following applications:

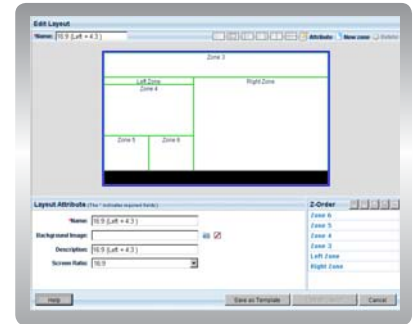
- Kiosk
- Retail
- Entertainment/ Gaming
- Education
- Manufacturing
- Finance
- Healthcare
- Hospitality
- Control and Monitoring

## Web Content Manager

WebContent Manager software is one of the primary components in the comprehensive Web Signage System. This web-enabled server software provides central management of Web signage appliances as media players, and automates the design and distribution of a wide variety of multimedia file formats into playlists. Playlists are then set into schedules and stored in a central database for distribution to the network of signage appliances. With the Web Content Manager, the message to be played is assembled, scheduled, and delivered for dynamic playback over a network of appliances using standard file formats and protocols.

### Feature Highlights:

- Groups and Players
- Media Management
- Ticker
- Multiple-zones
- Preset Templates
- Playlists
- Scheduling
- Urgent Casts
- System Management
- Reporting
- Auto Recovery



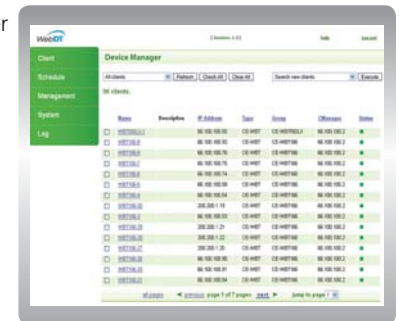
## Web Device Manager

Web Device Manager is a comprehensive software management tool to remotely manage networked Web appliances. It provides a web browser interface fronting a database management system which supports—e.g., inventory, organize, control, update—a network of Web signage appliances over the LAN, WAN, or wireless networks.

The Web Device Manager utilizes “push and pull” technology to interact with remote appliances, allowing system administrators to inventory hardware, update applications and registry entries, shutdown/reboot/wake-up devices, update system firmware and software, along with access to advanced logging and scheduling capabilities.

### Feature Highlights:

- Client Inventory
- History and Job Manager
- Scheduling
- Group Management
- Appliance Shutdown
- WakeOnLan
- Image Management
- File Package
- BIOS Management
- Database Support



## Major Options

- Built-in 802.11a/b/g WLAN
- IR touch screen
- Magnetic card reader

\* Options subject to change without notice.

## Accessories



**Desktop Stand**

P/N: ACC-008-44

**Call MIDCOM Today...**  
**(800) 643-2664**

**Ask About our FREE**  
**Try & Buy Program**